

# Kansas State University Technical Assistance to Brownfields (TAB) Communities July 1, 2020–September 30, 2021 Executive Summary – for Activities in EPA Regions 5, 6, 7, 8 & Nationwide

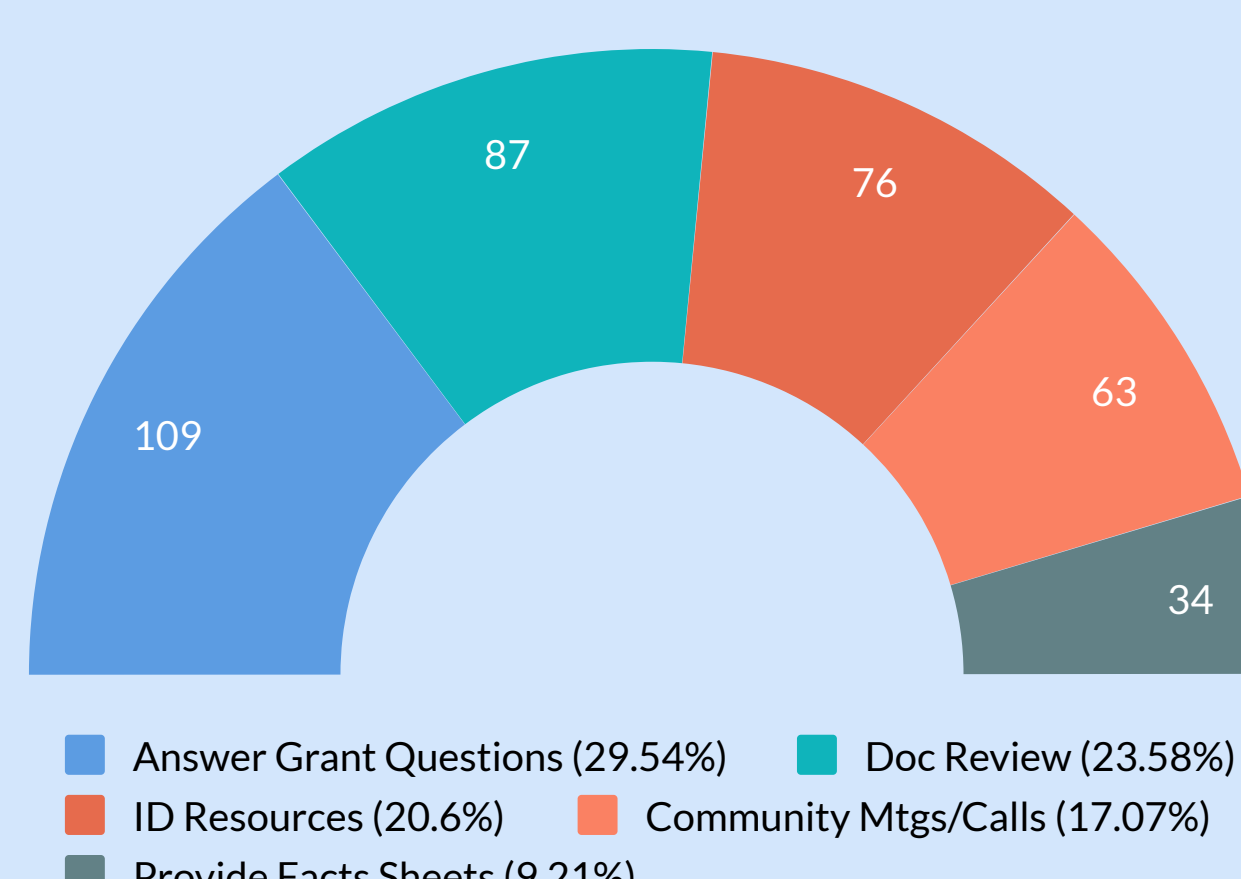
## SITE SERVICES OUTCOMES

**189** Total communities that received technical assistance

**33%** Tribal and EJ communities that received technical assistance

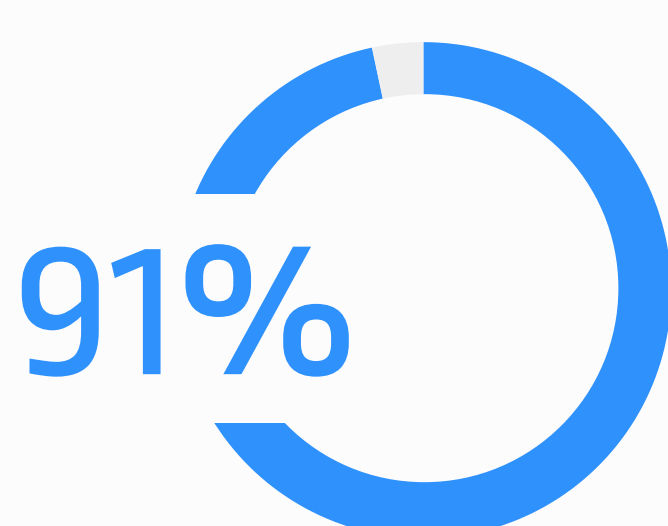
**117** Communities receiving ongoing technical assistance

### Most Provided Site Services



## EVALUATION OUTCOMES

**2,414** people participated in **52** TAB educational events; 2 in-person workshops, 31 virtual workshops, and 19 webinars.



### Usefulness of TAB Event

Nearly all participants indicated the event they attended would be useful or very useful in their jobs or communities.

**40% INCREASE** IN PARTICIPANT READINESS TO PARTICIPATE IN BF REDEVELOPMENT

**48% INCREASE** IN PARTICIPANT UNDERSTANDING OF BROWNFIELDS TOPICS

**42% INCREASE** IN BROWNFIELDS RESOURCES AVAILABLE TO PARTICIPANTS

**39% INCREASE** IN PARTICIPANT PREPAREDNESS TO WRITE GRANT APPLICATION

## ONLINE E-TOOLS & RESOURCES



### Website Visits

Page views totaled 159,760, in 38,474 sessions, by 23,257 new users



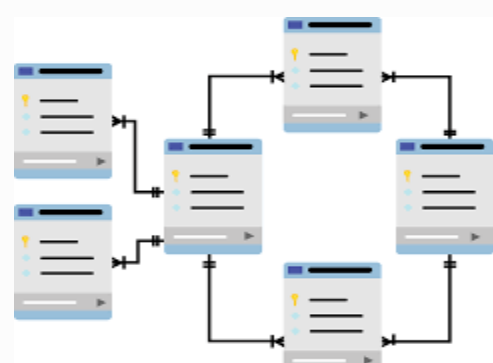
### Website Users

Over 8,100 active registered users; 511 from Tribes & 633 from micro-communities



### TAB EZ

Users created 112 proposal templates and drafted portions of over 15 proposals



### BiT

Online database to inventory, prioritize, and track site progress. Over 750 users logged into BiT at least once



### BiT Mobile App

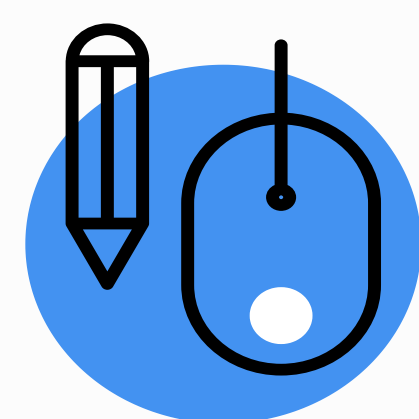
For use on smartphones to collect site data in the field. Over 250 users have downloaded the app



### Online Training

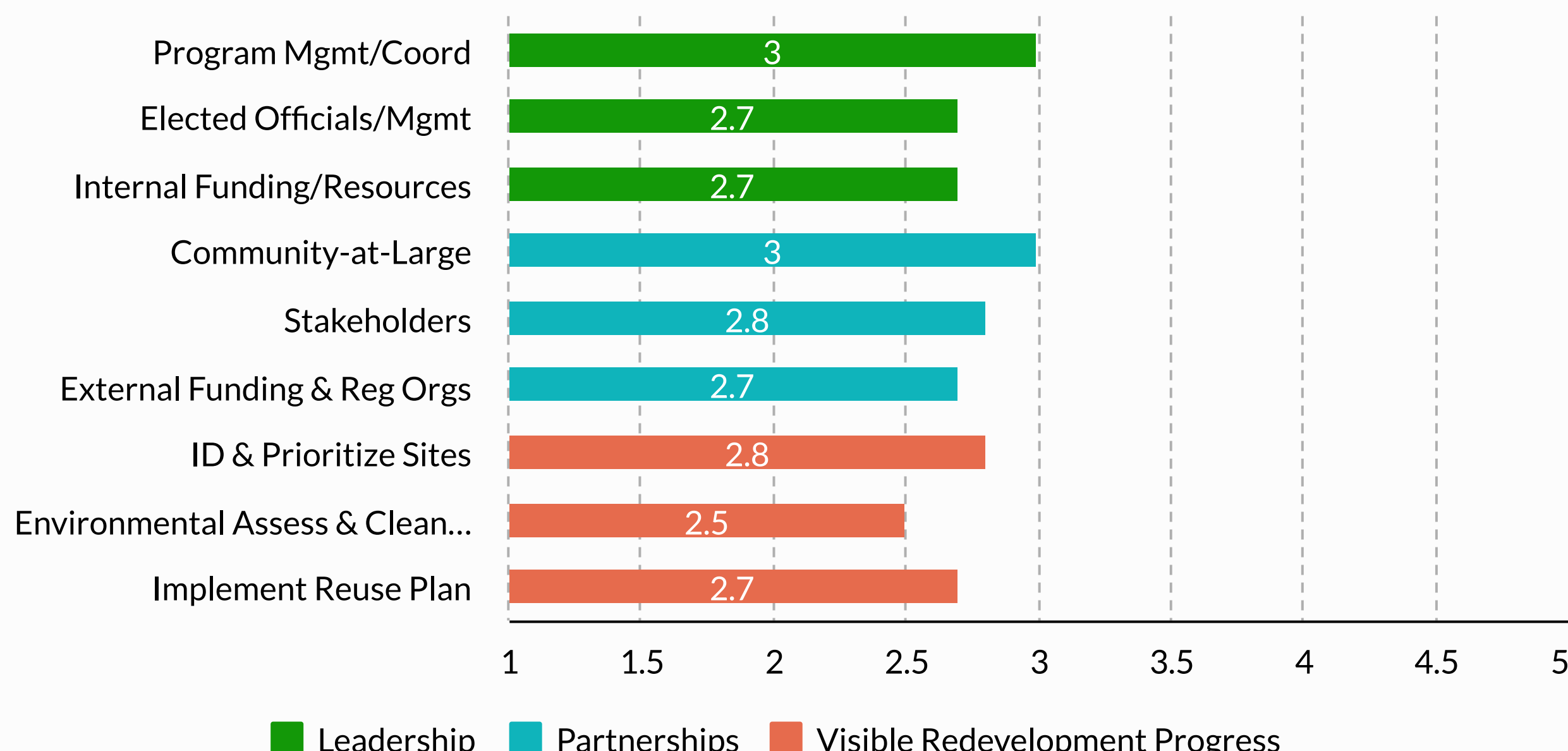
Pre-recorded webinar modules, supplemental materials, and review questions.

## PARTICIPATORY EVALUATION



### Brownfields COMMUNITY CAPACITY ASSESSMENT

Average responses from 6 communities who completed the assessment of their capacity in these areas of brownfields redevelopment. 1 = beginning and 5 = advanced



Access the full report [here](#)