



## Kansas State University

# Technical Assistance to Brownfields (TAB) Tribal Communities July 1, 2021 - June 30, 2022 Executive Summary

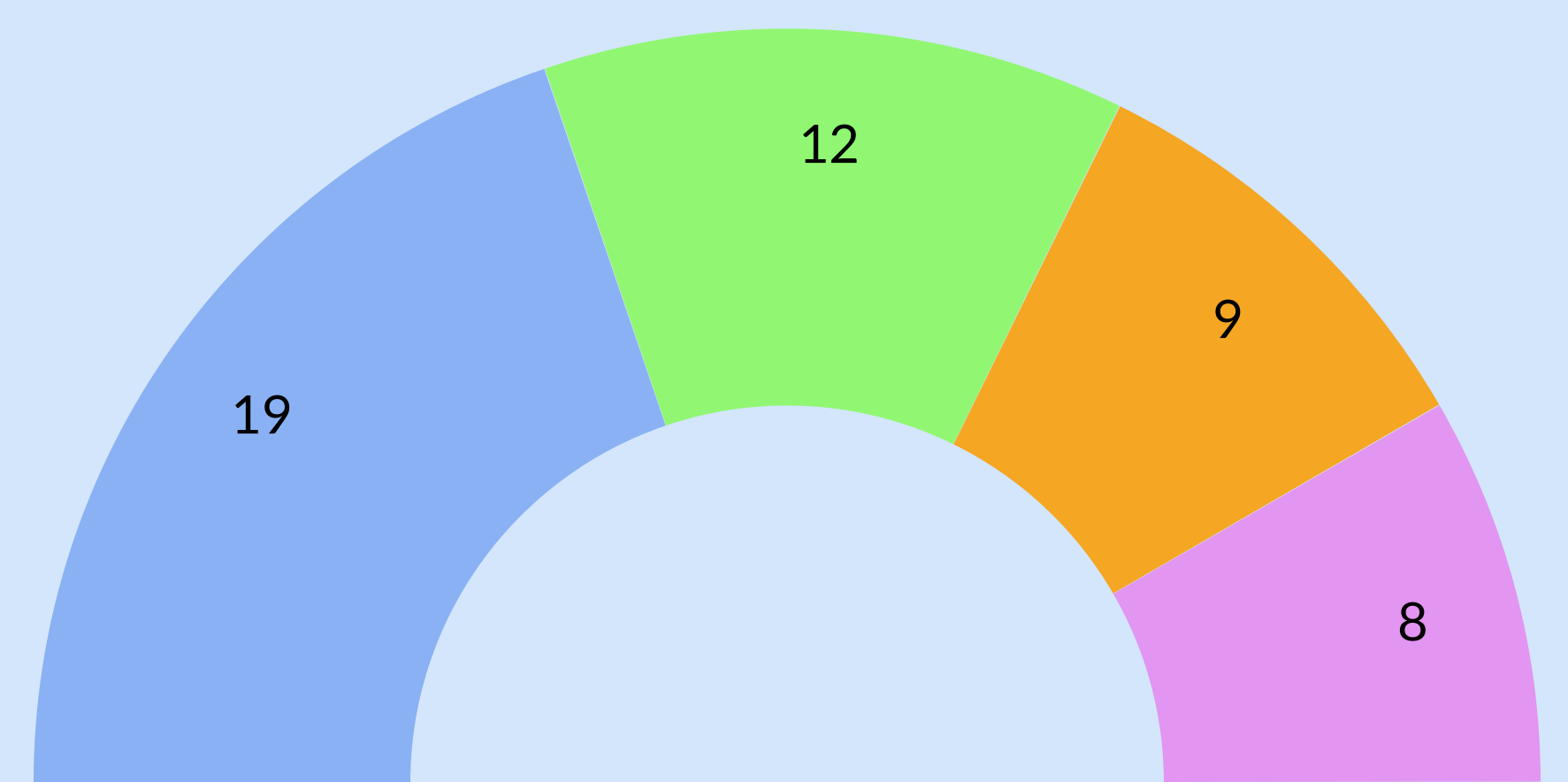
### SITE SERVICES OUTCOMES

**61** # of site-specific "assists" provided

**42** # of Tribes receiving technical assistance

**69%** % of Tribes receiving ongoing assistance

#### Most Provided Site Services

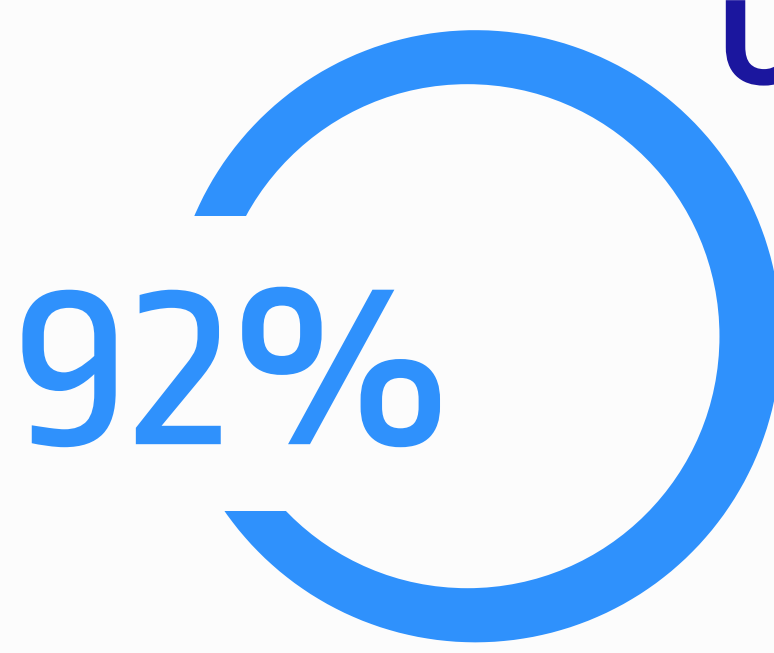


Building a BF program (39.58%)  
Grant review & support (25%)  
Other assistance (18.75%)  
Technical environmental support (16.67%)

### EVALUATION OUTCOMES

Over 1,000 people participated in 24 Tribal TAB events: 16 invited presentations, 6 virtual workshops, and exhibited at 2 conferences

#### Usefulness of Tribal TAB Event



Nearly all participants indicated the event they attended would be useful or very useful in their jobs or communities.

**42% INCREASE**

IN PARTICIPANT READINESS TO PARTICIPATE IN BF REDEVELOPMENT

**53% INCREASE**

IN PARTICIPANT UNDERSTANDING OF BROWNFIELDS TOPICS

**55% INCREASE**

IN BROWNFIELDS RESOURCES AVAILABLE TO PARTICIPANTS

### ONLINE E-TOOLS & RESOURCES



#### Website Users

Over 10,000 active registered users; more than 112,000 page views in over 27,000 sessions



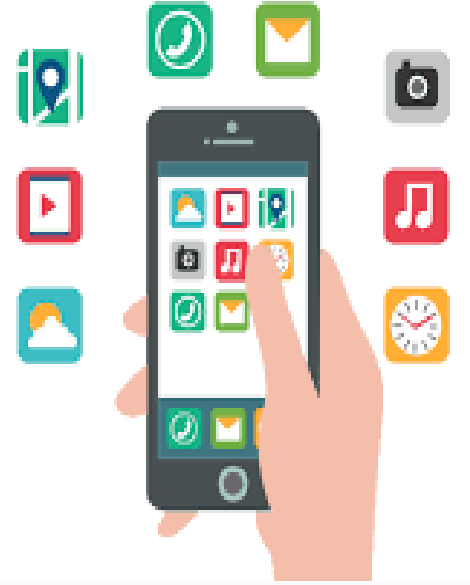
#### Tribal Brownfields Forum

Interactive forum for TRP and other Tribal professionals. Over 117 members with 106 active threads



#### TAB EZ

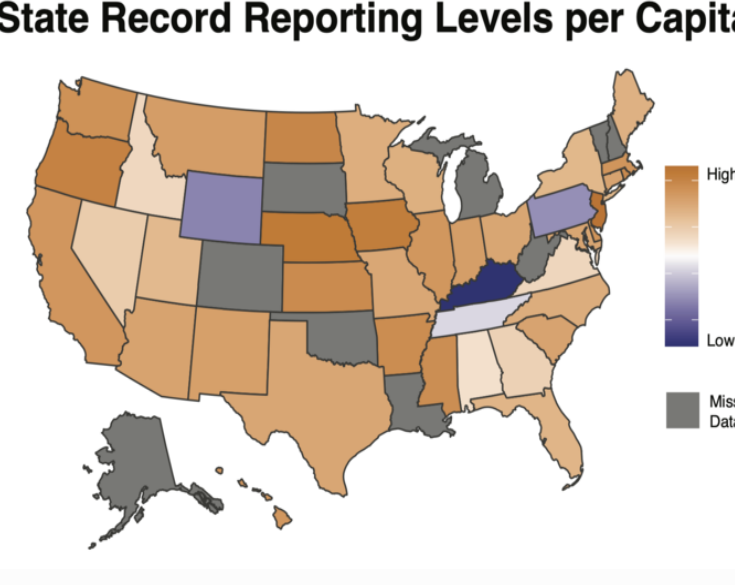
Users created 112 proposal templates and drafted portions of over 15 proposals



#### BiT and BiT Mobile

Database to inventory, prioritize, & track site progress. Over 870 users logged into BiT at least once and 250 have downloaded the app

State Record Reporting Levels per Capita



#### Platform for Evaluating Environmental Records (PEER)

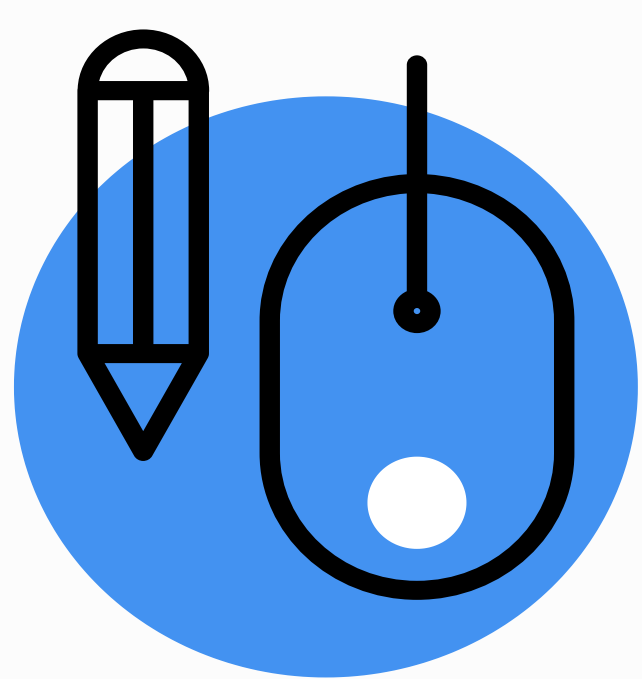
Mapping tool for communities to view environmental sites to identify & prioritize brownfields



#### Online Training

Pre-recorded webinar modules, supplemental materials, and review questions.

### PARTICIPATORY EVALUATION



## Tribal Brownfields Capacity Building and Evaluation

**1**

The National Tribal Brownfields Working Group (NTBWG) provides technical, interdisciplinary, and peer guidance related to Tribal tasks, including site-specific assistance; Online Tribal Brownfields Forum; Roundtables, workshops, and webinars; and capacity-building tools. The NTBWG met 8 times during the reporting period and discussed many issues, including how Tribes can best prepare for the Brownfields Infrastructure Law funding opportunities.

**2**

Brownfields Community Capacity Assessment is used to measure, track, and evaluate the long-term impact of site-specific technical assistance. Allows Tribal TAB to capture community perspectives on progress at brownfields sites to more accurately measure needs and gains.

Access the full report [here](#)