



Technical Assistance to Brownfields (TAB) Communities EPA Regions 5, 6, 7, 8, and Nationwide

October 1, 2021-September 30, 2022 Executive Summary

ONE-ON-ONE COMMUNITY ASSISTANCE & SPECIAL PROJECTS

194

Total communities that received technical assistance

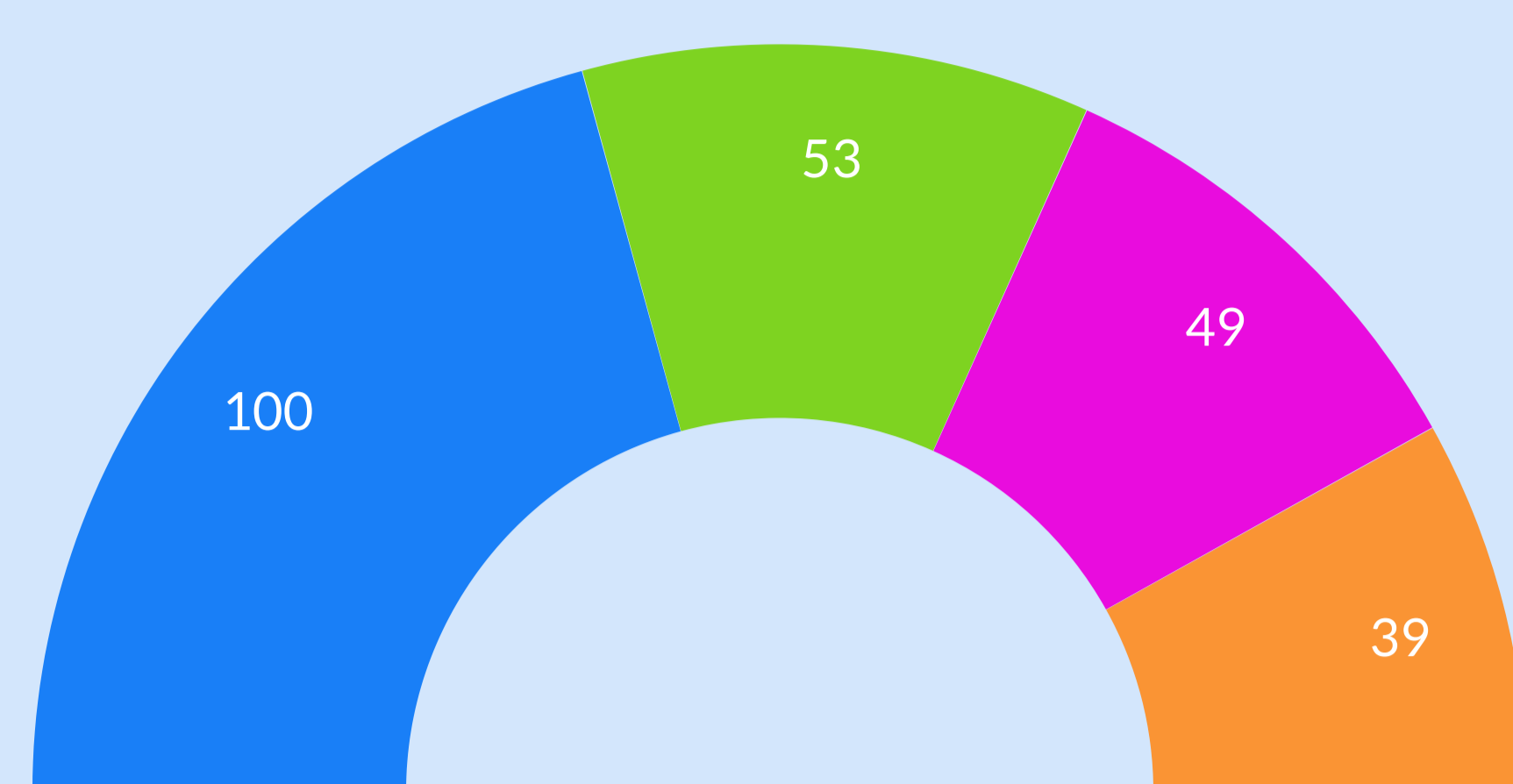
47%

Tribal/EJ communities that received technical assistance

57%

Communities receiving ongoing technical assistance

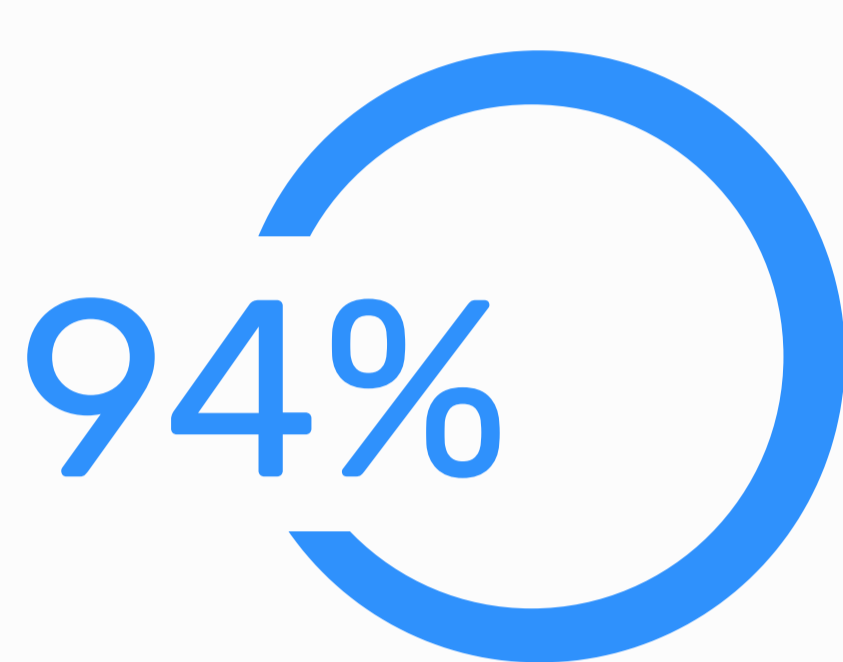
Most Provided Site Services



■ Grant review & support (41.49%)
■ Other assistance (21.99%)
■ Building a brownfields program (20.33%)
■ Site reuse planning (16.18%)

REGIONAL & NATIONAL OUTREACH PROGRAMMING

Over 3,000 people participated in 72 TAB educational events: 33 invited presentations/exhibits, 26 workshops, and 13 webinars



Usefulness of TAB Events

Nearly all participants indicated the event they attended would be useful or very useful in their jobs or communities.

37% INCREASE

IN PARTICIPANT READINESS TO PARTICIPATE IN BF REDEVELOPMENT

38% INCREASE

IN PARTICIPANT UNDERSTANDING OF BROWNFIELDS TOPICS

41% INCREASE

IN BROWNFIELDS RESOURCES AVAILABLE TO PARTICIPANTS

46% INCREASE

IN PREPAREDNESS TO WRITE GRANT APPLICATION

Changes in retrospective pre-post measures of understanding (moderate & high level), readiness (somewhat & very ready), resources (some & many), and preparedness to write grants (somewhat & very prepared)

BUILDING CAPACITY WITHIN COMMUNITIES & E-TOOLS SUPPORT



KSU TAB Website

Page views totaled 96,069 in 23,744 sessions by more than 11,000 active registered users



Resource Roundtables

A total of 11 one-on-one sessions were held, including 10 Regional and 1 National



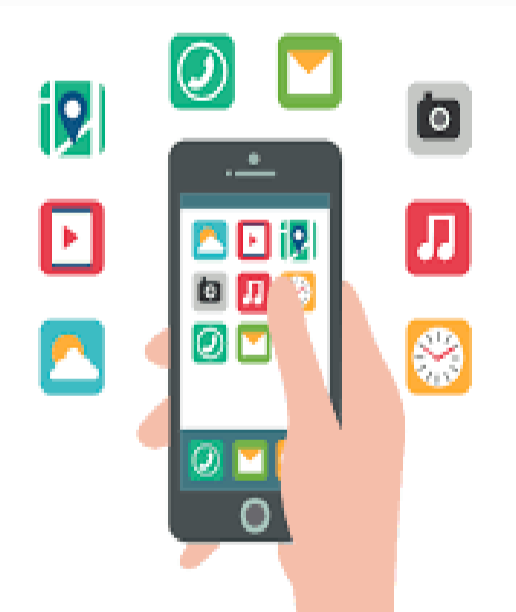
TAB EZ

Users created 60 proposal templates and drafted portions of over 15 proposals



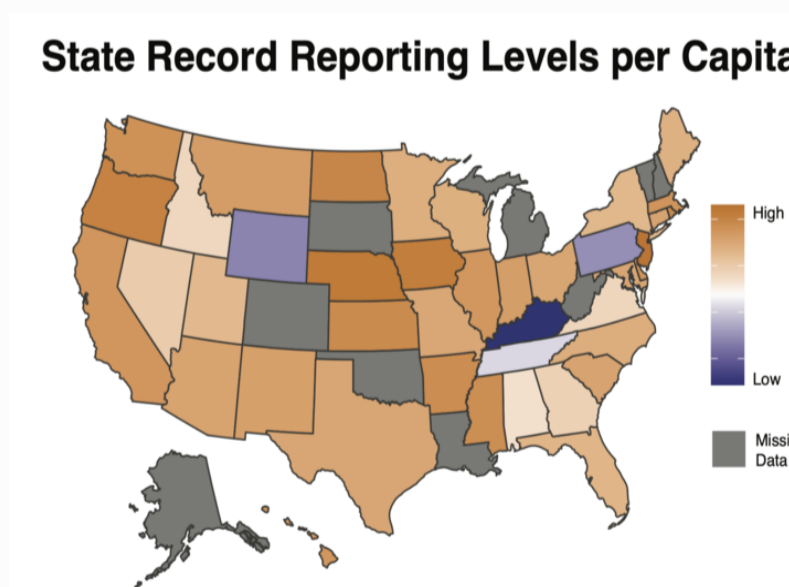
Brownfields Inventory Tool (BiT)

Database to inventory, prioritize, & track site progress. Over 870 users logged into BiT at least once



BiT Mobile App

Currently unavailable while upgrades being completed; previously, over 250 users downloaded app



Platform for Evaluating Environmental Records

Mapping tool for communities to view environmental sites to identify & prioritize brownfields



Resource Roadmaps

Identifying funding sources and resources in more than 15 communities, plus other work that could lead to funding services



Brownfields Community Capacity Assessment

Full-scale use; 1 community completed for first time and 1 community a second time with capacity growth in all categories



Online Training

Pre-recorded webinar modules, materials, & review questions. 51 completion certificates issued